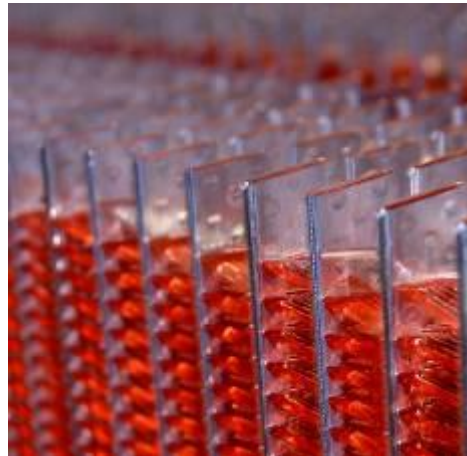




BERRY RADIATEURS MINERVA

COOLING SYSTEM SOLUTIONS



MADE IN
FRANCE

BERRY RADIATEURS TODAY

An ideal location
for serving our
clients



All of BERRY RADIATEURS' development and production takes place in France, at the industrial site near Bourges.

KEY FIGURES

SURFACE AREA

Two 6,600m² covered
production sites

NUMBER OF PRODUCTS MANUFACTURED

8,800 by year

VOLUME OF MATERIALS PROCESSED

65 tonnes of aluminium
73 tonnes of brass and copper

PRESENT IN FRANCE, EUROPE AND AFRICA



QUALITY & CUSTOMER SATISFACTION



OUR SATISFACTION IS THE ONE OF OUR CUSTOMERS

High quality for increased customer satisfaction

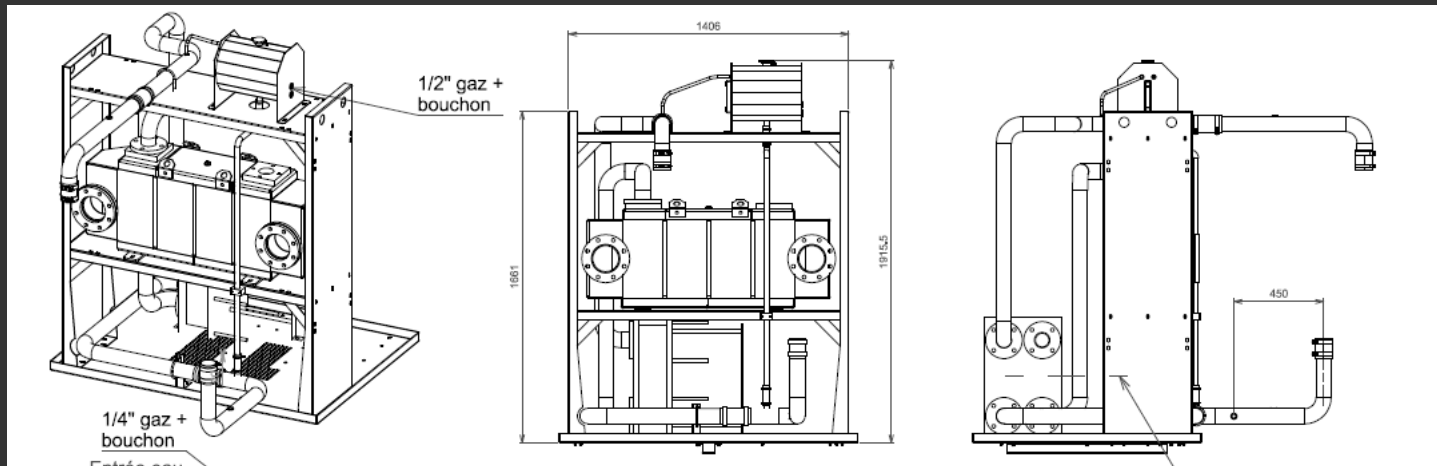


To ensure quality results and perfect customer satisfaction, continuous improvement is our guiding principle. Every day, we monitor, communicate with and train the teams to ensure all procedures are followed.

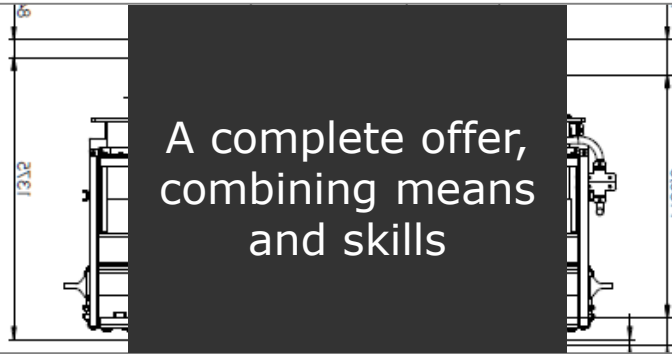


We care about our environment and recycle all of our waste

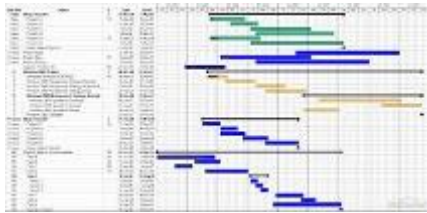
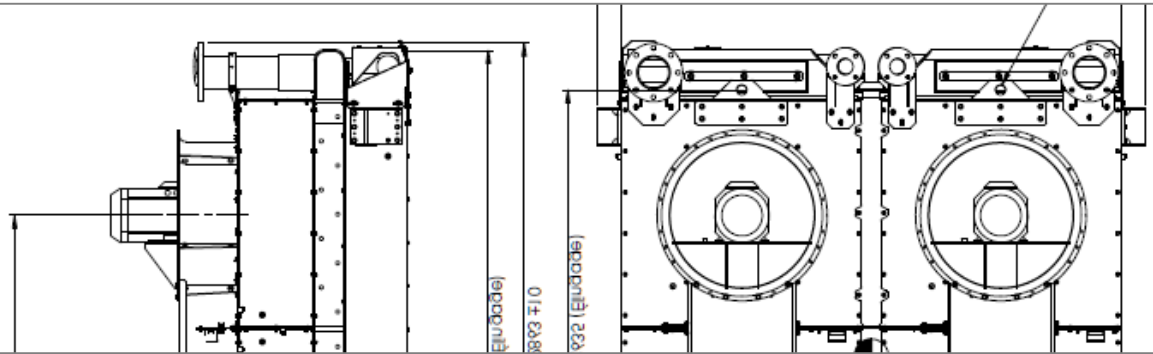
RESEARCH & DEVELOPMENT



RESEARCH AND DEVELOPMENT



A complete offer,
combining means
and skills



A team that listens to its Clients

Products defined using your specifications

Comprehensive monitoring of your project

Research, design and simulation, prototyping, validation, industrialisation, pre-production and production

Fully integrated: ventilation, electrical control, connection kit (hose, clamps), frame

Test bench for radiator's characterization (pull test, thermal)





THE TECHNOLOGIES

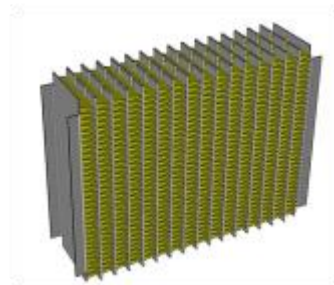
COPPER

A complete range
to accommodate
all projects

MAC CORD COPPER CORE

For cooling engine water

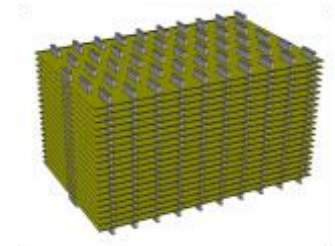
3 combinations available:
PMC-MMC-MMC



FIN AND TUBE COPPER CORE

For cooling engine water

3 combinations available:
TA-NG-CATER



ALUMINIUM

A complete range
to accommodate
all projects

RAS ALUMINIUM CORE

For charge air cooler

Obtained by controlled atmosphere brazing following the NOCOLOK (CAB) procedure.



BAR PLATE ALUMINIUM CORE

For cooling engine water, air turbo, oil and gasoil

Obtained by vacuum brazing





OUR PRODUCTION EQUIPMENT

OUR PRODUCTION EQUIPMENT

Independent
manufacturing



COPPER CORE WORKSHOP

- 5 MAC CORD assembly tables
- 6 TA-CATER-NG assembly tables
- 12 fin machines
- 3 brazing furnaces
- 4 tin baths
- 1 SCHÖLER tube machine
- 8 header die sinking presses
- 1 punching machine



ALUMINIUM CORE WORKSHOP

- 4 assembly tables
- 3 fin machines
- 1 SECO-WARWICK controlled atmosphere brazing line



OUR PRODUCTION EQUIPMENT

Independent
manufacturing

WELDING/BRAZING WORKSHOPS

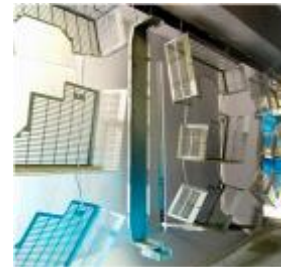
Welding: Steel, Stainless Steel,
Aluminium, Brass

Solder: Tin, Phosphorus, Silver



ASSEMBLY AND SURFACE TREATMENT WORKSHOP

One 750m² area dedicated to product assembly
1 conventional paint booth
1 automated powder coating paint line
1 radiator drying oven



OUR PRODUCTION EQUIPMENT



Independent
manufacturing

SHEET METALWORKS

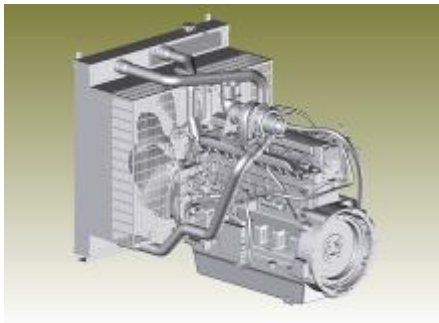


- 1 LVD GLOBAL 20 punch with loader and unloader
- 1 AMADA ARIES245 punch
- 1 PIVATIC digital punch with belt
- 1 digitally-controlled LVD press brake, 80 tonnes / 3,000mm long
- 1 automated SALVAGNINI folding cell, 135 tonnes (LVD+KUKA)
- 1 digitally-controlled LVD shear
- 9 hydraulic presses from 55 to 130 tonnes

APPLICATIONS & PRODUCT EXAMPLES

APPLICATIONS

Genset and compressors

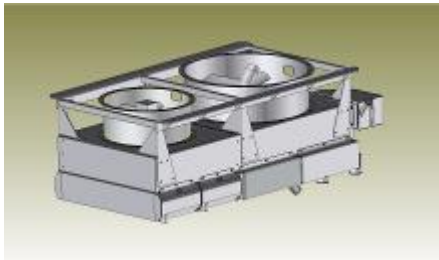


STANDARD COMPOSITION

- Engine water cooler using copper or aluminium technology
- Aluminium charge air cooler
- Structure with protective grates in steel treated with epoxy or polyester
- Expansion tank
- Connection kit with clamps, hoses and bended pipes with a thermal insulation
- Air filter hose with pinning for sensor
- Ventilation or fan

APPLICATIONS

Public works and construction

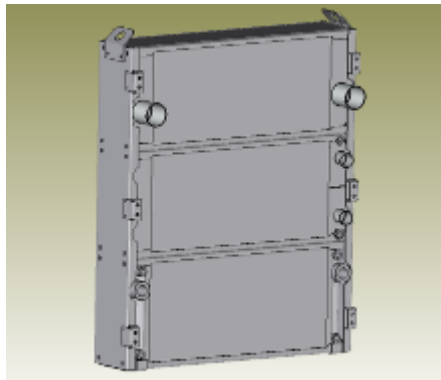


STANDARD COMPOSITION

- Engine water cooler using copper or aluminium technology
- Aluminium charge air cooler
- Aluminium hydraulic oil cooler
- Aluminium gasoil cooler
- Steel structure treated with epoxy or polyester
- Expansion tank
- Connection kit with clamps, hoses and bended pipes with a thermal insulation
- Hydraulic ventilation or fan

APPLICATIONS

Forestry and
Agriculture

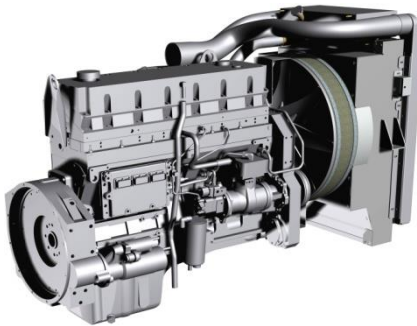


STANDARD COMPOSITION

- Engine water cooler using copper or aluminium technology
- Aluminium charge air cooler
- Aluminium hydraulic oil cooler
- Aluminium gasoil cooler
- Steel structure treated with epoxy or polyester
- Expansion tank
- Connection kit with clamps, hoses and bended pipes with a thermal insulation
- Hydraulic ventilation or fan

APPLICATIONS

Road transport



STANDARD COMPOSITION

- Engine water cooler using copper or aluminium technology
- Aluminium charge air cooler
- Aluminium hydraulic oil cooler
- Aluminium gasoil cooler
- Steel structure treated with epoxy or polyester
- Expansion tank
- Connection kit with clamps, hoses and bended pipes with a thermal insulation
- Fan or Hydraulic ventilation or electrical ventilation

APPLICATIONS

Rail transport



STANDARD COMPOSITION

- Aluminium engine water cooler
- Aluminium charge air cooler
- Aluminium hydraulic oil cooler
- Aluminium gasoil cooler
- Steel structure treated with epoxy, polyester
- Expansion tank
- Electrical or hydraulic ventilation

APPLICATIONS

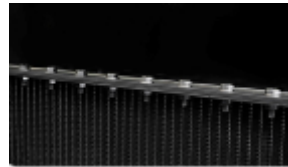
Military



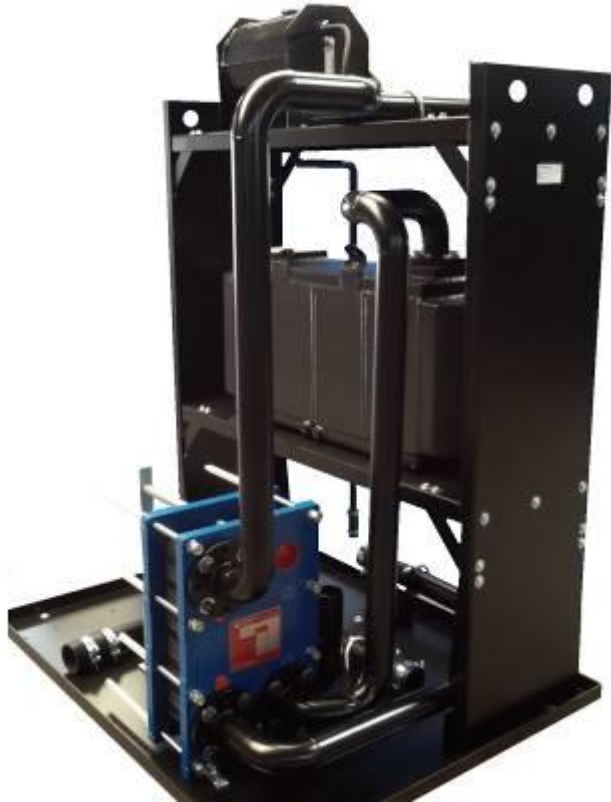
STANDARD COMPOSITION

- Engine water cooler using copper or aluminium technology
- Aluminium charge air cooler
- Aluminium hydraulic oil cooler
- Aluminium gasoil cooler
- Steel structure treated with epoxy or polyester
- Expansion tank
- Connection kit with clamps, hoses and bended pipes with a thermal insulation
- Fan or Hydraulic ventilation or electrical ventilation

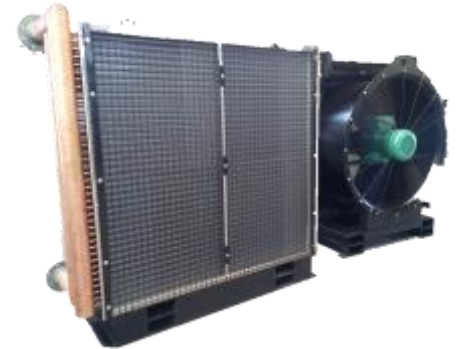
SOME OF OUR PRODUCTS



SOME OF OUR PRODUCTS



SOME OF OUR PRODUCTS



CUSTOMER REFERENCES



CONTACTS



BERRY RADIATEURS

82 Rue des Pieds Blancs
ZI de Malitorne - BP12
18230 Saint-Doulchard

Tel: +33 (0)2 48 24 09 70
Fax: +33 (0)2 48 65 94 30

Management

Eric Moreau

Tel: +33 (0)2 48 24 09 70
eric.moreau@minerva-cs.com

Sales Contact

Benoît Salazar

Tel: +33 (0)2 48 24 74 47
benoit.salazar@minerva-cs.com